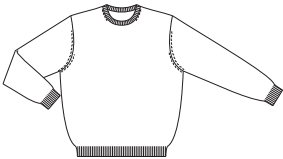


Spec Sheet

Group:	Mens Sweaters	Desc:	*5SRSJ02LR Roundtree Crew/Vee	Area:	Mens
Product:	KSP	Grade Table:	Mens Sweater Alpha	Sample Size:	L(42/44)

	POM	Description	Current Measure	POM	Description	Current Measure	POM	Description	Current Measure
	BL-41	*Body Length-HPS to Hip	28						
	AS-01	*Across Shoulder-Regular	19						
	SH-01	Shoulder Slope	2						
	CH-02H	*Chest at 1inch Below Armhole - Half	23						
	SW-06H	*Sweep Relaxed-Rib/Elastic - Half	18 1/2						
	AH-04	*Armhole Depth-Shoulder to Armhole	10 1/2						
	AU-03H	*Upper Arm 1in Below - Half	8 1/2						
	SL-11	*Sleeve Length from CBN-Long	34 1/2						
	SO-01H	*Sleeve Opening-Long - Half	3 3/4						
	SO-06H	Forearm/Patch from Sleeve Opening - Half	6						
SO-07	Forearm Placement	6							
NO-04H	*Minimum Neck Opening Extended - Half	12							

Sweater Descriptive Spec Sheet

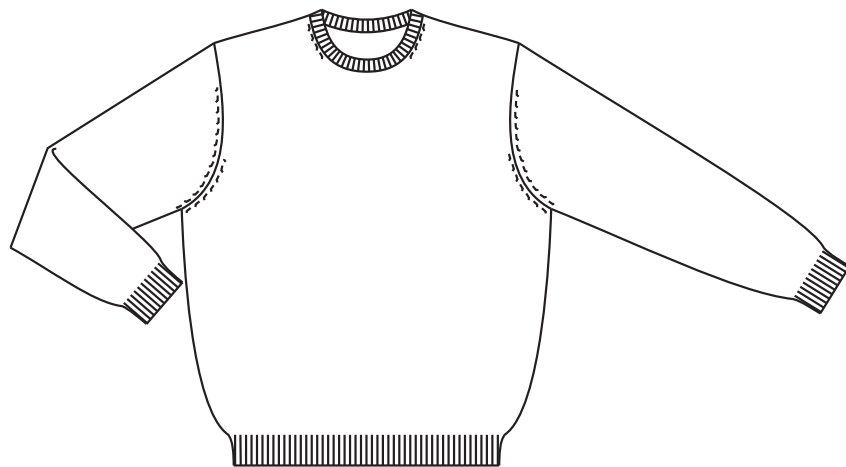
Group:	Mens Sweaters	Desc:	*5SRSJ02LR Roundtree Crew/Vee	Area:	Mens
Product:	KSP	Grade Table:	Mens Sweater Alpha	Sample Size:	L(42/44)
Garment Part	Qty	Description	Ref#	Gauge	Stitch/Structure
NECKLINE - Crew	0.0	W/ Marks 2 NDLS From Seam		0.0	FULL FASHION
NECK FIN-RIB	0.0	2 PLY 1X1 Rib	1	0.0	LINK
SHOULDER SEAM	0.0	Back Fashioned W/ Marks 2 NDLS From Seam	2	0.0	LINK
SLV/ARMHOLE FIN - Full Fashion	0.0	W/ Marks 2 NDLS From Seam	3	0.0	LINK
		**Cast off 3/4" on sleeves and side seam			
SLEEVE - Long	0.0		4	0.0	LINK
SLEEVE OPEN - Rib	0.0	1X1 Rib Start	5	0.0	SWEATER START w/ ELASTIC
SIDE SEAM	0.0		4	0.0	LINK
SWEEP/HEM - Rib Start	0.0	1X1 Rib Start	6	0.0	SWEATER START w/ ELASTIC

Sketch Sheet - Front

Group: **Mens Sweaters**
Product: **KSP**

Desc: ***5SRSJ02LR Roundtree Crew/Vee**
Grade Table: **Mens Sweater Alpha**

Area: **Mens**
Sample Size: **L(42/44)**



Sketch Sheet - Back

Group: **Mens Sweaters**
Product: **KSP**

Desc: ***5SRSJ02LR Roundtree Crew/Vee**
Grade Table: **Mens Sweater Alpha**

Area: **Mens**
Sample Size: **L(42/44)**

